

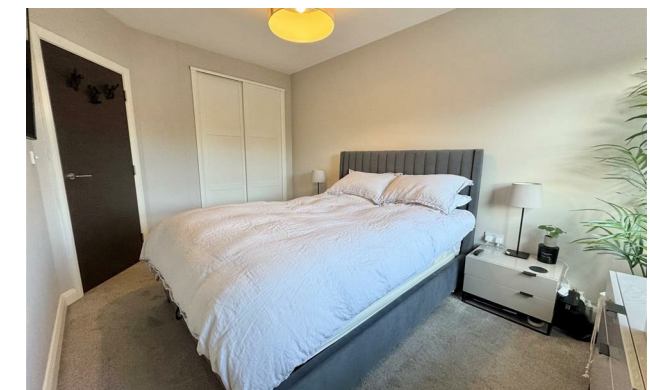


jordan fishwick

14 Bollin Heights, 3 Macclesfield Road,
Guide Price £184,950

Bollin Heights Wilmslow SK9 1BZ

Guide Price £184,950




This stunning one bedroom first floor apartment is located only a stone's throw from Wilmslow town centre and a couple of minutes walk to Wilmslow train station, making it ideal for the commuter. Located within this exclusive small development of Bollin Heights offering luxury and secure gated accommodation with a range selected facilities unique to this development. The development benefits from BBQ and garden area with all-weather seating, soft landscaped maintained gardens. There are also bike storage facilities. Furthermore there is a storage area for grocery's/deliveries and post room adding extra convenience. In brief the apartment accommodation comprises: communal entrance hall, private entrance hall, open plan kitchen/living room with built in appliances, large bedroom with fitted storage and a modern bathroom suite. Allocated parking space. Ideal for first time buyers or as an investment opportunity.

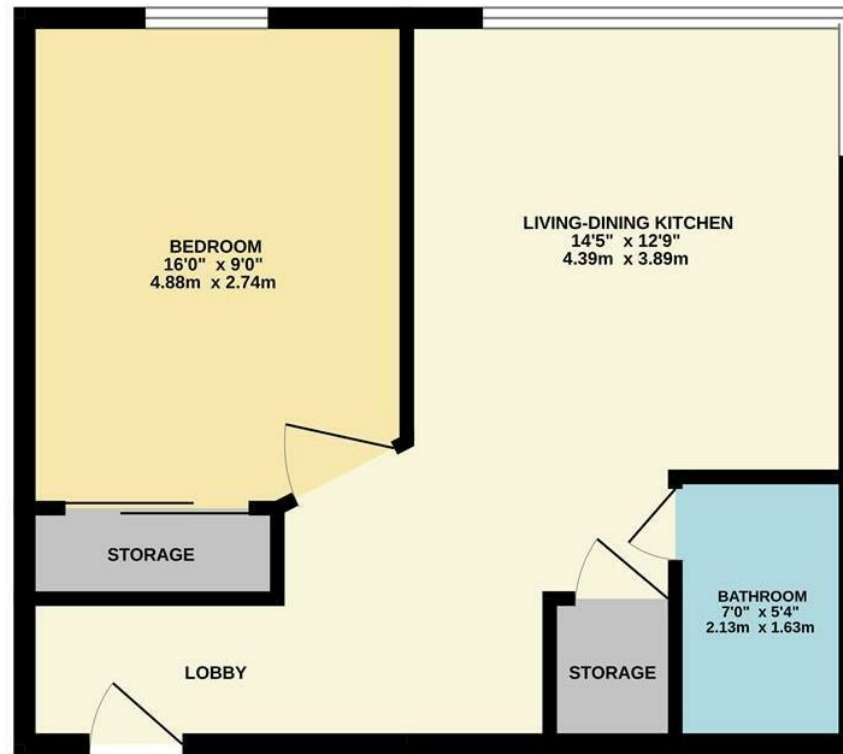


- Central location
- Gated
- Popular development
- Parking
- Close proximity to amenities
- Open plan kitchen/living space
- Fitted kitchen
- Communal outdoor space



Energy Efficiency Rating		
	Current	Potential
Very energy efficient - lower running costs		
(92 plus) A		
(81-91) B		
(69-80) C	73	73
(55-68) D		
(39-54) E		
(21-38) F		
(1-20) G		
Not energy efficient - higher running costs		
England & Wales	EU Directive 2002/91/EC 	





APARTMENT

Measurements are approximate. Not to scale. Illustrative purposes only
Made with Metropix ©2025



These particulars are believed to be accurate but they are not guaranteed and do not form a contract. Neither Jordan Fishwick nor the vendor or lessor accept any responsibility in respect of these particulars, which are not intended to be statements or representations of fact and any intending purchaser or lessee must satisfy himself by inspection or otherwise as to the correctness of each of the statements contained in these particulars. Any floorplans on this brochure are for illustrative purposes only and are not necessarily to scale.

Offices at: Chorlton, Didsbury, Disley, Hale, Glossop, Macclesfield, Manchester Deansgate, Manchester Whitworth Street, New Mills, Sale, Wilmslow and Withington

36-38 Alderley Road, Wilmslow, Cheshire, SK9 1JX

01625 532000

wilmslow@jordanfishwick.co.uk

www.jordanfishwick.co.uk